

Linking Landscapes

Helping wildlife move around the Crowsnest Pass



The Crowsnest Pass supports the full complement of iconic Canadian Rocky Mountain mammals

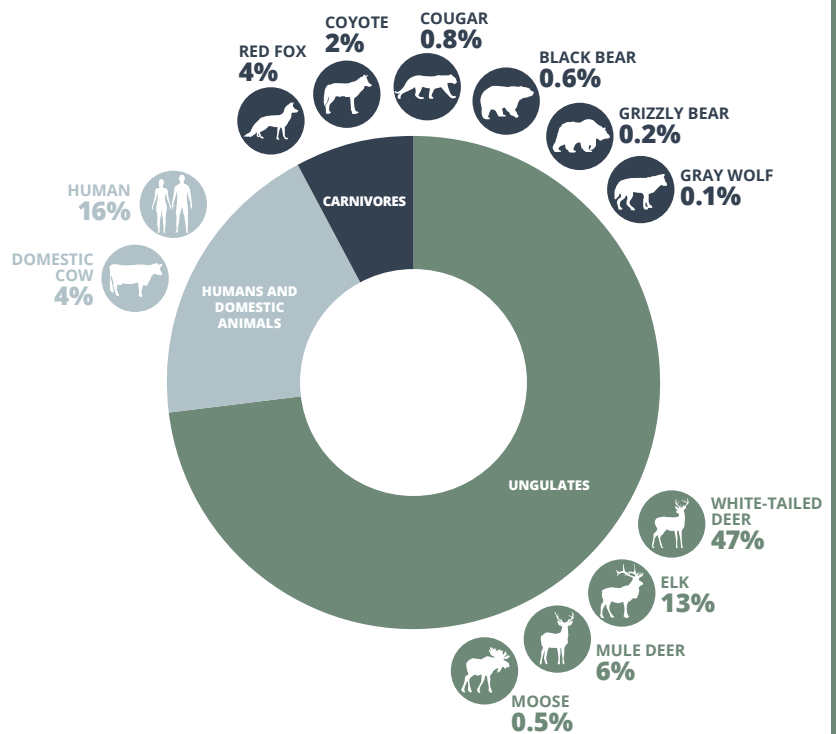
Animals need to move through the region but it is bisected by Highway 3 and a railway that animals need to cross to access food, water and mates.

We installed 30 remote cameras for 2 years (2020-2022) to document wildlife activity along Highway 3 and to determine if wildlife are using existing infrastructure to cross the road.

Powered by community volunteers

21 highly dedicated volunteers put in **1,231** hours to support camera maintenance and image classification!

Who's using the Crowsnest Pass?



How common are wildlife vehicle collisions?

Highway 3 in the Crowsnest Pass supports approximately 7,000 vehicles per day.

The Government of Alberta has announced plans to twin Highway 3 and re-align a section of the highway.

Wildlife vehicle collisions along Highway 3 are common, dangerous and costly. **We identified nine road mitigation sites** where crossing infrastructure could reduce motorist safety risk while enabling safe movement of wildlife across the highway.

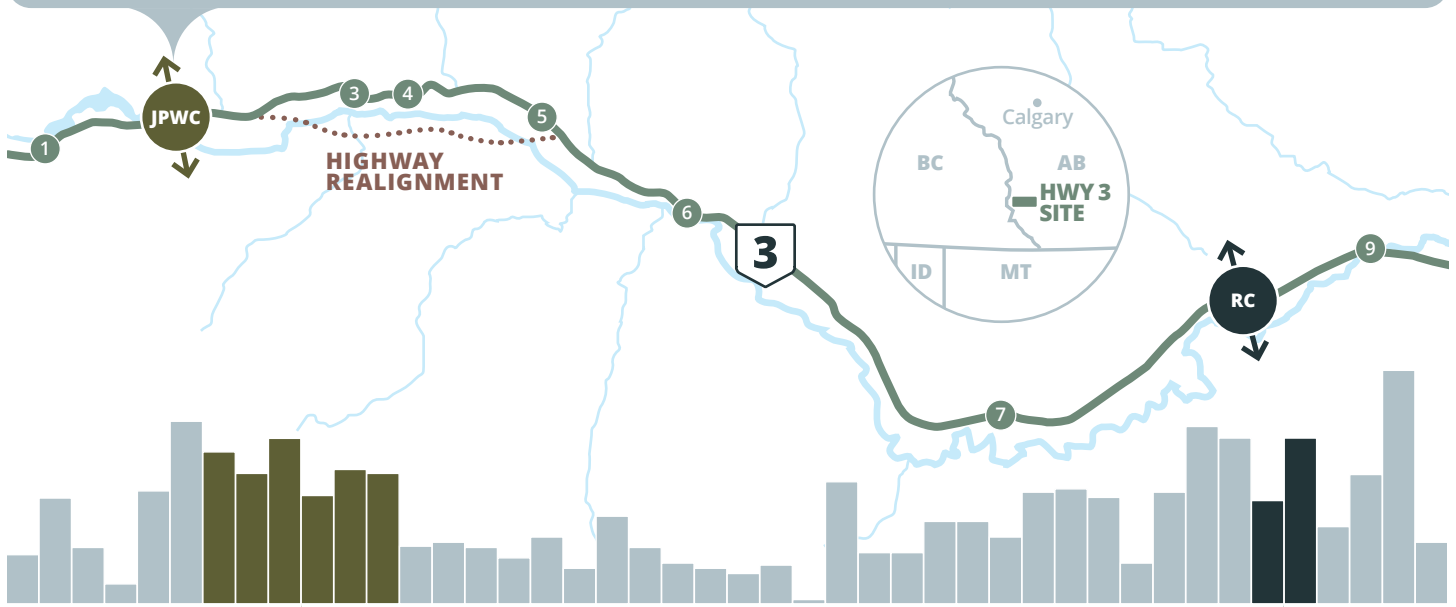
ARE WILDLIFE USING EXISTING INFRASTRUCTURE TO CROSS?

- We used remote cameras to document if wildlife are using existing infrastructure to cross Highway 3 at the Jim Prentice Wildlife Corridor (JPWC) and Rock Creek (RC)
- We documented some species crossing at the Crowsnest River Bridge underpass in the JPWC
- Modification of the existing structure or a new crossing structure are needed in the JPWC to better accommodate multi-species movement

USED CROWNEST RIVER BRIDGE TO CROSS:



DID NOT USE CROWNEST RIVER BRIDGE TO CROSS:



ANIMAL-VEHICLE COLLISION (AVC) ANNUAL COSTS PER KILOMETRE



Jim Prentice Wildlife Corridor
\$1.2 million per year

Rock Creek
\$408,000 per year

Based on a 5-year average the total annual cost of collisions along Highway 3 for our study area is
\$8,267,575 CAD!



FUNDERS

Woodcock Foundation • Wilburforce Foundation • CPKC
TC Energy • Yellowstone to Yukon Conservation Initiative
Canadian Western Bank • TD Friends of the Environment
Alberta Biodiversity Monitoring Institute

POWERED BY COMMUNITY VOLUNTEERS

Corridor Maps By Species: Ungulates

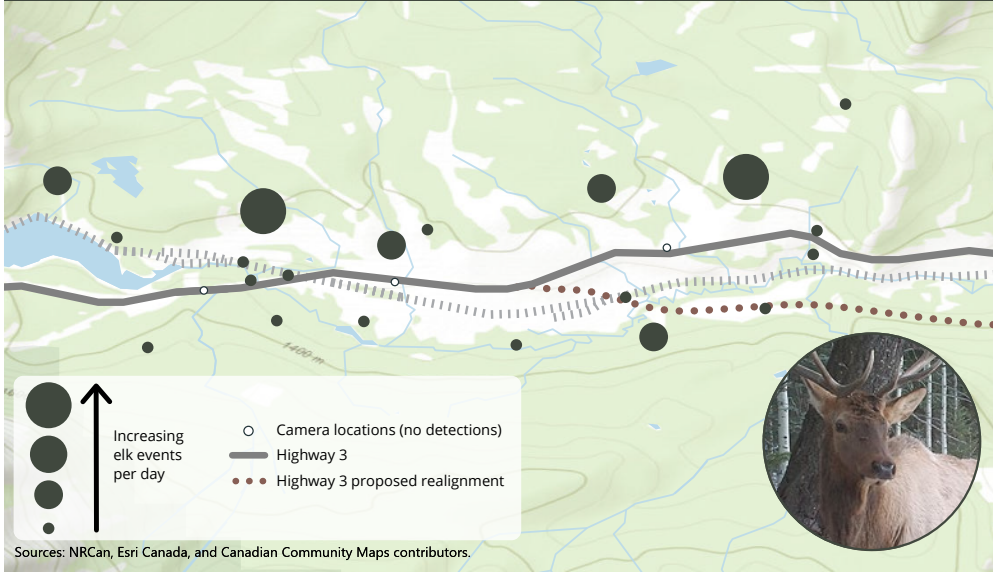
Here we display events per day by camera for different ungulate species, the bigger the circle the more times this species was detected at the camera location.



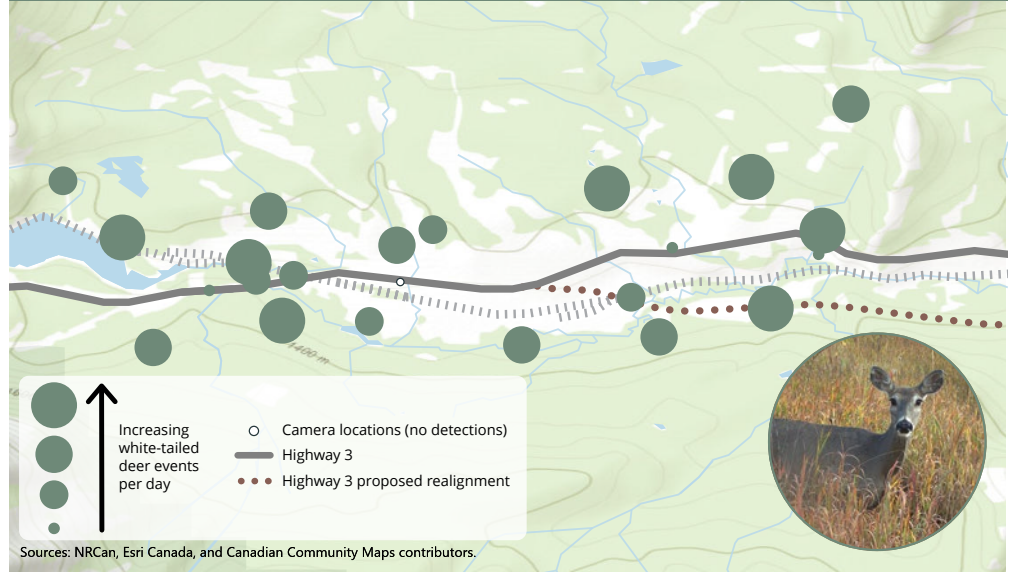
Miistakis
Institute



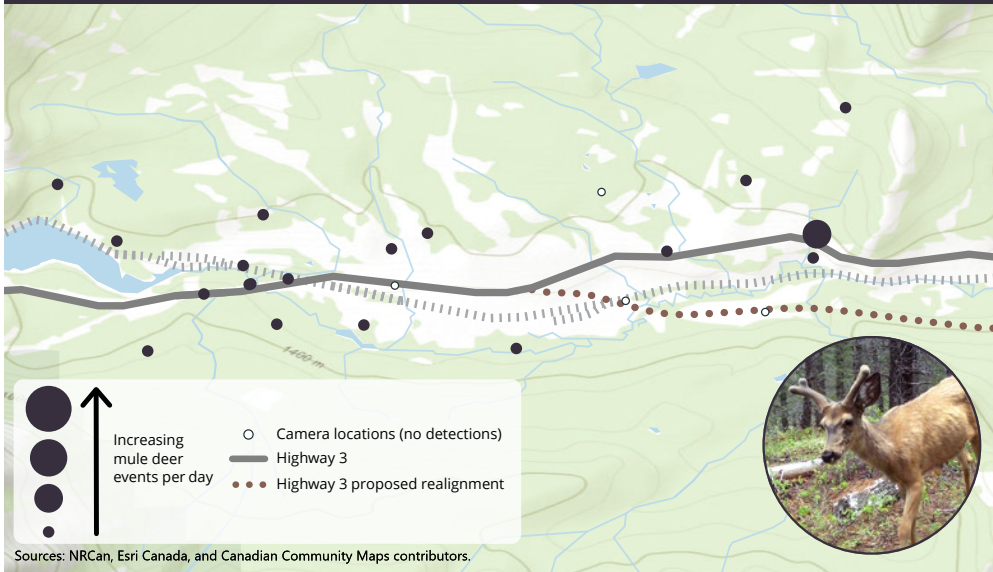
Elk



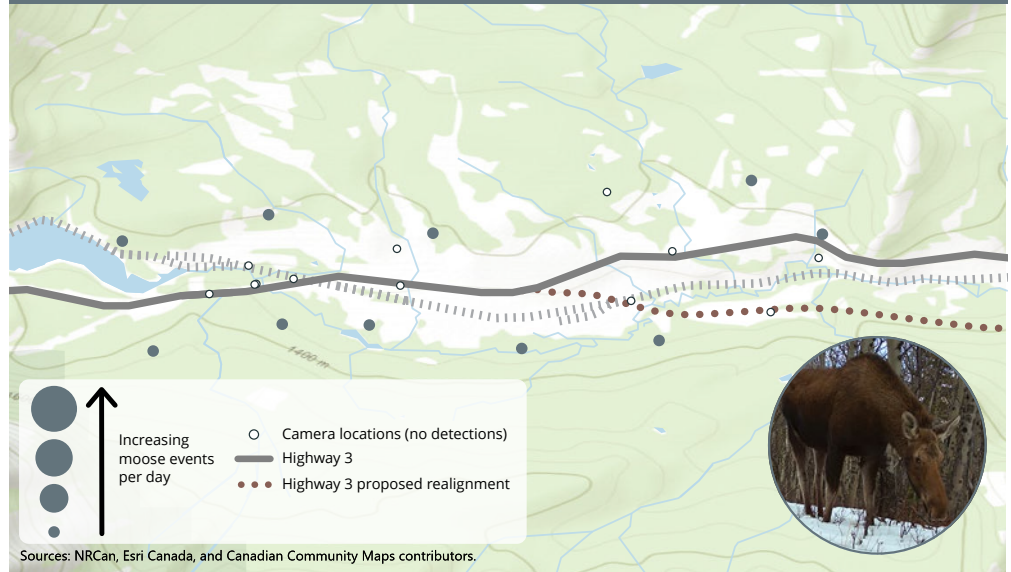
White-tailed Deer



Mule Deer



Moose



Corridor Maps By Species: Carnivores

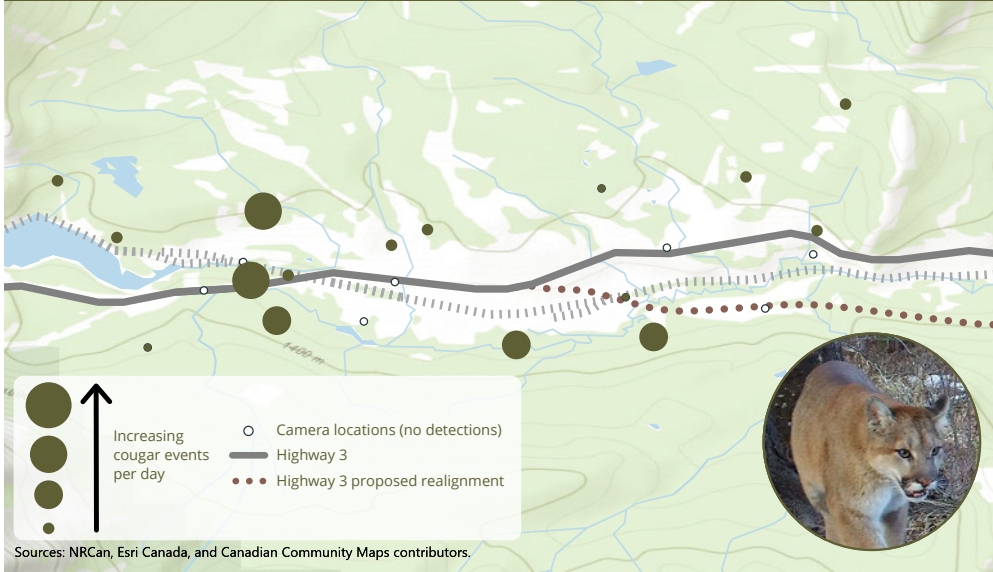
Here we display events per day by camera for different carnivore species, the bigger the circle the more times this species was detected at the camera location.



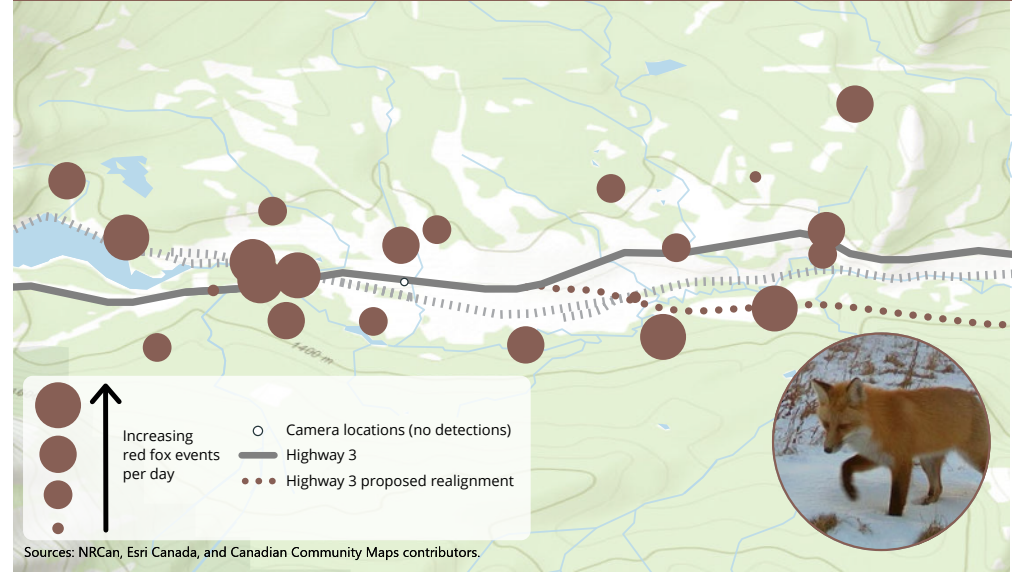
Miistakis
Institute



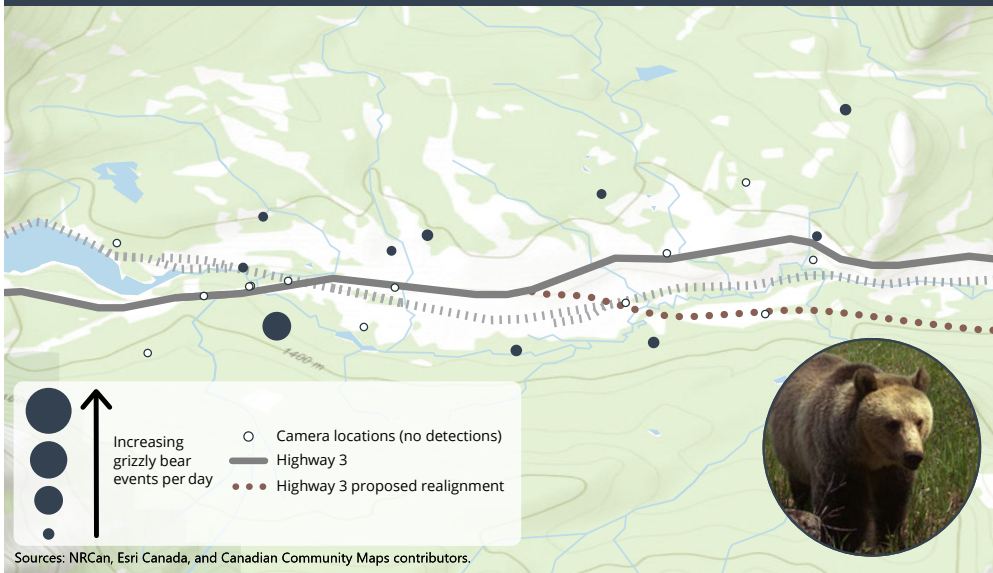
Cougar



Red Fox



Grizzly Bear



Wolf

