



Miistakis
Institute




ANNUAL REPORT

2018/2019



Innovative research. Engaged communities. Healthy landscapes.



Innovative research
Engaged communities
Healthy landscapes

The Miistakis Institute specializes in evaluating complex environmental problems and using our equally diverse skill sets and tools to resolve them.

PHOTO CREDIT: RAVEN WEST

Our year in numbers

For over 20 years Miistakis has made it our mission to get conservation information into the hands of decision makers, to support conservation decision making and to improve environmental outcomes. In 2018/19 we continued to do that, conducting sound, credible, innovative research and disseminating it to a wide array of audiences.

This year we are presenting what we have been up to in a different way. We are showcasing a number of different metrics that paint a picture of the breadth and depth of our work.

These metrics are presented collectively across the 6 research thematic areas in which Miistakis has developed considerable expertise, and for which we are recognized locally, regionally and internationally.

One of the metrics we are most proud of (and surprised by) is the 39,467 downloads of Miistakis materials over the past year. Yes, you read that right, 39,467 in one year. This includes all of the documents that Miistakis has created over the past 20 years that are available online, which includes over 550 reports.

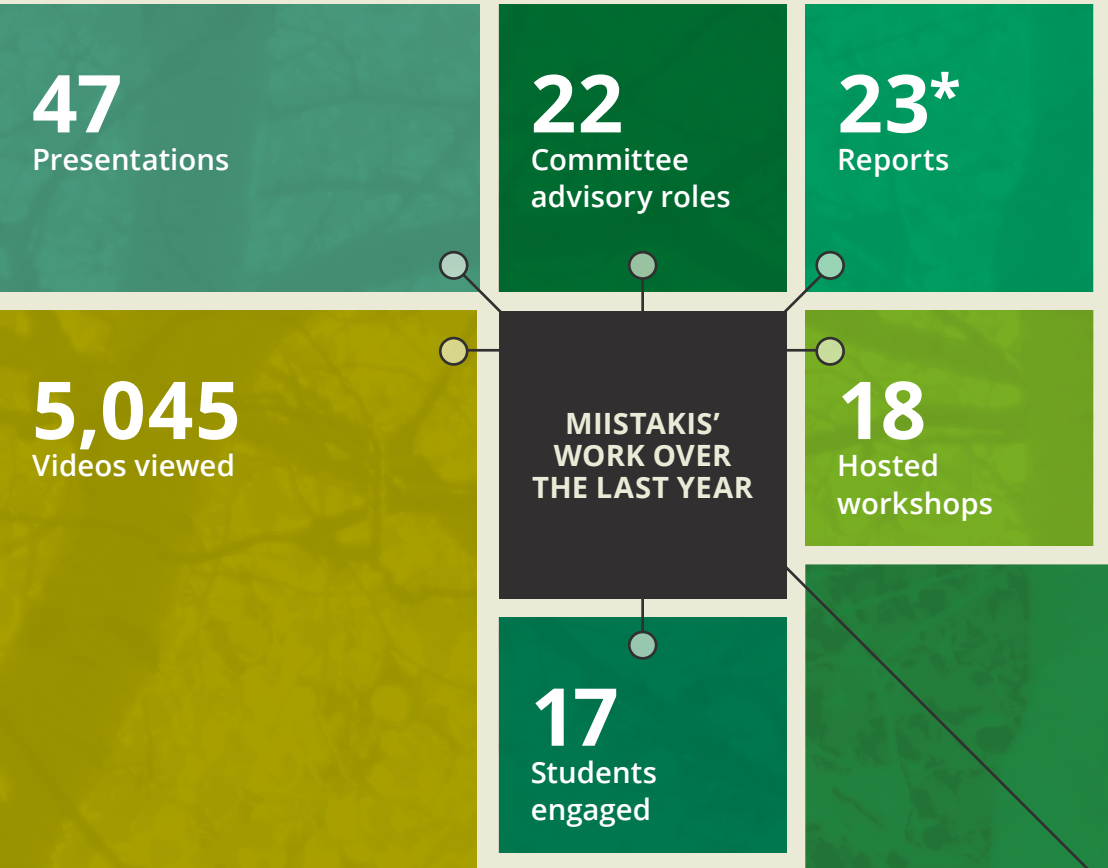
To better understand the impact of Miistakis's work, we also looked at the downloads over time. This surprised us, too. For example, our Highway Wildlife Mitigation Opportunities for The Trans-Canada Highway in the Bow River Valley report was downloaded over 1,300 times in the past year and 3,371 times since it was created in 2012. Our Conservation Easements for Agriculture in Alberta report was downloaded 532 times over the past year and 2,014 times since its 2012 release. So, in addition to our new research created over the past year, which you can read more about in this annual report, our past work continues to be relevant and sought after.

Over the next year and coming years we will continue to pursue research that applies to the conservation challenges of today and the future.

Please check out our website www.rockies.ca to read more about our 2018/2019 work.



Danah Duke
Executive Director



THE IMPACT OF OUR WORK IS BROAD—BOTH IN TERMS OF WHO WE'RE CONNECTING WITH AND THE MANY WAYS WE CONNECT WITH THEM.

39,467
Document downloads

***23 REPORTS** DEMONSTRATING THE IMPRESSIVE SCOPE OF WHAT WE DO.

ALBERTA AND THE PATHWAY TO TARGET 1 – INTERIM ISSUES ASSESSMENT

ASSESSING PRIVATELY-CONSERVED AREAS FOR ALIGNMENT WITH PATHWAY TO CANADA TARGET 1

COLLISION COUNT: IMPROVING HUMAN AND WILDLIFE SAFETY ON HIGHWAY 3

CONNECTING URBAN PARKS: EXPLORING WILDLIFE CORRIDORS IN CALGARY

CONTRIBUTION OF ALBERTA PRIVATE LAND CONSERVATION TO BIODIVERSITY PROTECTION – INTERIM RECOMMENDATIONS

CREATING A FOUNDATION FOR YOUR ESA POLICIES: REPORT TO THE CALGARY METROPOLITAN REGION BOARD

EDMONTON ECOROOF INITIATIVE FOR CLIMATE CHANGE RESILIENCY: ECOROOF FUNCTION RESEARCH

HIGHWAY 22: HUMAN AND WILDLIFE SAFETY ASSESSMENT

HIGHWAY 68 COMPREHENSIVE WILDLIFE ROAD CROSSING PATTERNS STUDY

IMPROVING HUMAN AND WILDLIFE SAFETY ALONG ALBERTA'S HIGHWAY NETWORK

INTEGRATION OF PRIVATE LAND CONSERVATION INTO CARTS SCREENING MATRIX AND DATABASE

LEAST CONFLICT LANDS: MUNICIPAL DECISION SUPPORT TOOL FOR SITING RENEWABLE ENERGY DEVELOPMENT

MOUNT NORQUAY GONDOLA DEVELOPMENT: WILDLIFE ASSESSMENT

MUNICIPAL FLOOD AND DROUGHT ACTION PLANNING PRIMER

PATH TO COEXISTENCE: MEETING RECORD OF A MULTI-PERSPECTIVE WORKSHOP

PLANNING TO CONNECT: A GUIDE TO INCORPORATING ECOLOGICAL CONNECTIVITY INTO MUNICIPAL PLANNING

PLUZS AND PNT'S: OPPORTUNITIES AND LIMITATIONS FOR CONSERVING NATURE

PROPOSED DEFINITION OF "BIODIVERSITY CONSERVATION" IN THE ALBERTA CONTEXT

PROPOSED REVISED DATABASE FIELDS FOR CARTS

PROPOSED SCREENING MATRIX FOR CONSERVATION AREA INCLUSION IN CARTS

THE ECOROOF INITIATIVE FOR CLIMATE CHANGE RESILIENCY: JURISDICTIONAL REVIEW

TO FOSTER THE WELL BEING OF THE ENVIRONMENT: INTERPRETING ALBERTA MUNICIPALITIES' NEW PURPOSE

TRACKING PRIVATE LAND CONSERVATION: A PROPOSED BLUEPRINT FOR AN ALBERTA-BASED INVENTORY

Activities by research area

Citizen Science for Conservation

Miistakis advanced grizzly bear and pronghorn conservation, wildlife connectivity and wetland health through the implementation of 5 citizen science projects across Alberta, B.C. and Saskatchewan. These projects are generating data to inform these conservation challenges and creating a knowledgeable and engaged citizenry. Miistakis continued to advance the field of citizen science with our work with Alberta Environment and Parks to develop Principles and Strategies to guide and support citizen science initiatives in Alberta.

Transportation Ecology

Miistakis improved wildlife connectivity for wildlife through our transportation efforts including the development of a decision support tool in Alberta that prioritizes highway segments for mitigation that specifically considers wildlife connectivity needs. Miistakis also contributed to the field of transportation ecology by calculating a correction factor that more accurately estimates the costs associated with wildlife vehicle collisions, improving the consideration for installation of wildlife mitigation measures.

Municipalities and Conservation

Miistakis promoted more sustainable land use decisions at the local government level through the development of a least conflict lands decision support tool that informs planning of renewable energy development while considering ecological, agricultural, industry and cultural priorities. Miistakis contributed to the implementation of the City of Edmonton's Climate Change Strategy by investigating the role ecoroofs play in the context of climate change resiliency and adaptation. Miistakis worked to increase municipal capacity for environment and conservation research and planning through a web-based fund-pooling tool.

Human Wildlife Coexistence

Miistakis enhanced watershed resiliency by promoting coexistence with beavers through our continued beaver coexistence research and outreach, specifically through the promotion of coexistence tools and the ecosystem contributions of beavers. Miistakis contributed to an important dialogue around sustainable development and human wildlife coexistence in Banff National Park by conducting a wildlife assessment of a proposed gondola at a ski hill in Banff. Miistakis also advanced human wildlife coexistence through the hosting of strategic discussions around what steps are needed in the path to realizing human-wildlife coexistence on agricultural lands in Alberta.

Private Land Conservation

Miistakis worked to ensure private land conservation was appropriately considered in the national accounting of protected areas, undertaking assessments and providing recommendations at the provincial and national level. Miistakis also worked to support the land trusts across Canada to understand how their projects aligned with the national initiatives. And at the local level, Miistakis met with and presented to landowner groups, local governments, and individual landowners to increase understanding of the tools and options for privately-conserved land.

Conservation Planning and Policy

Miistakis supported municipal conservation planning through the development of an action planning tool to assist in assessing and mitigating flood and drought risks in an ecologically grounded way. Miistakis also analyzed provincial policy around local governments' new responsibilities regarding the environment, working to clarify the intent, identify policy gaps, and propose a route forward. In the Calgary region, Miistakis undertook work to improve policy for environmentally sensitive areas. And Miistakis created practical guidance to local governments in the Crowsnest Pass for incorporating ecological connectivity into their land use policies.

Miistakis at Mount Royal University

As Mount Royal University's only affiliated research institute, the Miistakis Institute explores opportunities to enhance MRU's environmental research capacity, and works with MRU faculty, staff and students to realize environmental outcomes.

Miistakis takes an interdisciplinary approach to all of our research and we are able to enhance students exposure to interdisciplinary research through student internships, student mentorship, student volunteer opportunities, class lectures and case studies. Related to this, we are able to provide integrated work learning experiences by providing employment opportunities, both short and longer term, for students across campus. Most directly, Miistakis provides opportunities for students to enrich their academic experience through participation in research projects.

Over the past year Miistakis engaged 15 MRU students in on-the-ground applied research initiatives addressing complex environmental challenges including 2 full time summer interns.

All of our projects are collaborative in nature allowing student exposure to multiple stakeholders including government, industry, community, environmental not-for-profits and academic partners from other academic institutions.

WIDE RANGING
MAMMALS

Secure la
.../pu

Financial Statements

Statement of Financial Position

As at March 31, 2019

| | 2019 | 2018 |
|---|--------------------|-------------------|
| Assets | | |
| Current | | |
| Cash | \$ 892,708 | \$ 631,239 |
| Accounts receivable | 354,174 | 81,499 |
| Accrued project receivable | 11,862 | 46,381 |
| Short term investment (Note 3) | 120,000 | 120,000 |
| Goods and services tax recoverable | 2,884 | 2,837 |
| Prepaid expenses | 2,094 | 1,436 |
| | 1,383,722 | 883,392 |
| Equipment (NOTE 4) | 11,070 | 9,027 |
| | \$1,394,792 | \$ 892,419 |
| Liabilities and Net Assets | | |
| Current | | |
| Accounts payable and accrued liabilities | \$ 13,190 | \$ 40,820 |
| Wages payable | 23,733 | 34,264 |
| Deferred contributions related to operations (NOTE 5) | 851,051 | 467,676 |
| | 887,974 | 542,760 |
| Deferred contributions related to property and equipment (NOTE 6) | 1,239 | 1,668 |
| | 889,213 | 544,428 |
| Net Assets | | |
| Invested in equipment | 9,831 | 7,359 |
| Internally restricted (NOTE 7) | 140,000 | 140,000 |
| Unrestricted | 355,748 | 200,632 |
| | 505,579 | 347,991 |
| | \$1,394,792 | \$ 892,419 |

Statement of Operations

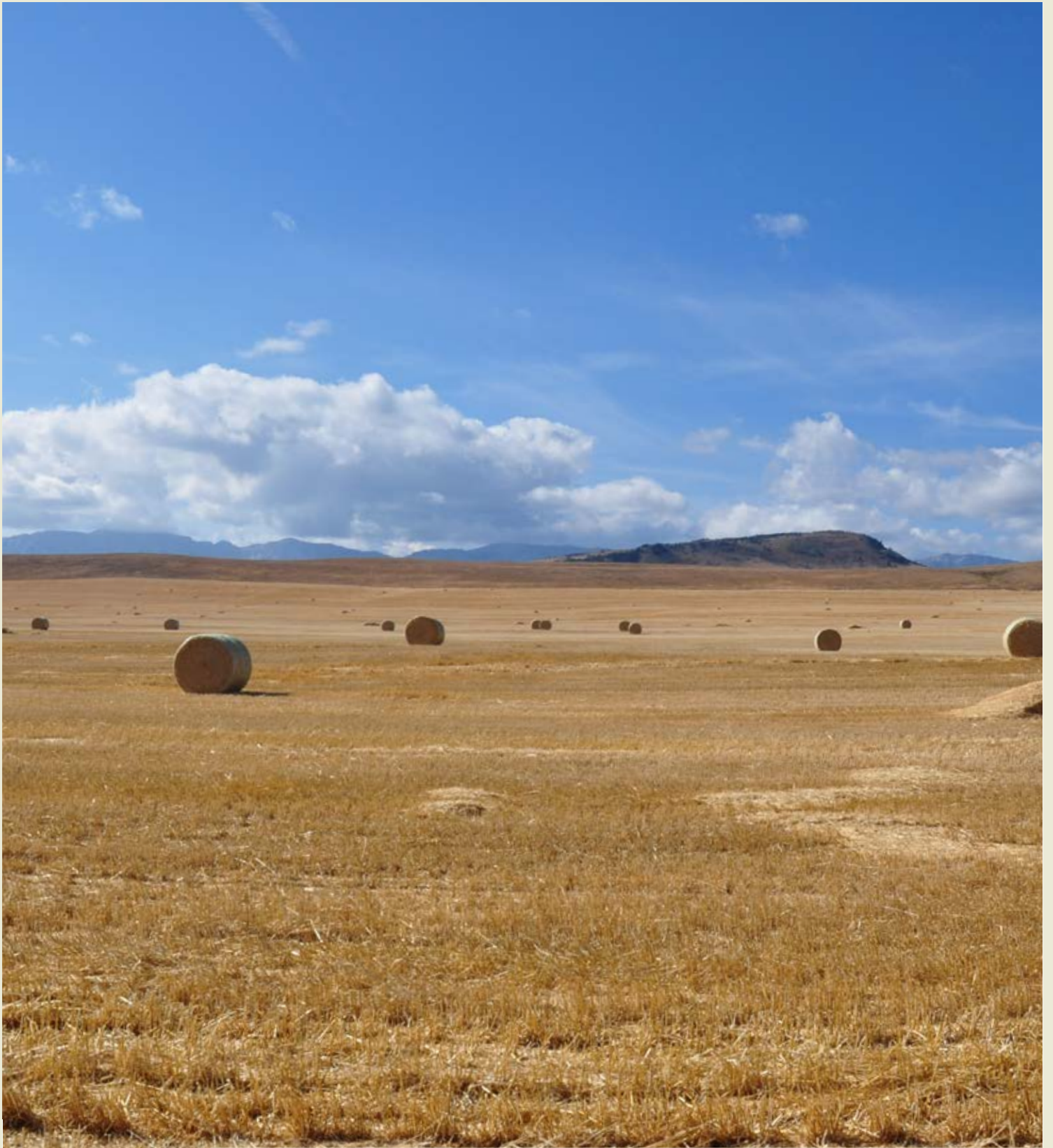
For the Year Ended March 31, 2019

| | 2019 | 2018 |
|--|-------------------|------------------|
| Revenue | | |
| Foundation and other grants | \$ 505,372 | \$ 513,274 |
| Services | 392,351 | 247,536 |
| Government grants | 264,081 | 203,959 |
| Donations | 63,907 | 5,303 |
| Interest and other income | 6,375 | 480 |
| | 1,232,086 | 970,552 |
| Expenses | | |
| Salaries and wages | \$ 566,031 | \$ 570,367 |
| Subcontractors | 361,054 | 275,455 |
| Supplies | 43,278 | 7,007 |
| Travel | 37,463 | 28,668 |
| Workshop | 25,828 | 11,055 |
| Professional fees | 18,161 | 18,964 |
| Insurance | 6,907 | 9,141 |
| Telephone | 4,035 | 4,144 |
| Amortization | 3,363 | 3,589 |
| Internet and web domain | 4,256 | 6,540 |
| Training | 1,178 | 329 |
| Software | 2,382 | 656 |
| Advertising and promotion | 512 | 62 |
| Interest and bank charges | 50 | - |
| | 1,074,498 | 935,977 |
| Excess of revenue over expenses | \$ 157,588 | \$ 34,575 |

Statement of Changes in Net Assets

For the Year Ended March 31, 2019

| | Invested in equipment | Internally restricted | Unrestricted | 2019 | 2018 |
|--|-----------------------|-----------------------|-------------------|-------------------|-------------------|
| Net assets – beginning of year | \$ 7,359 | \$ 140,000 | \$ 200,632 | \$ 347,991 | \$ 313,416 |
| Excess (deficiency) of revenue over expenses | (2,933) | - | 160,521 | 157,588 | 34,575 |
| Purchase of equipment | 5,405 | - | (5,405) | - | - |
| Net assets end of year | \$ 9,831 | \$ 140,000 | \$ 355,748 | \$ 505,579 | \$ 347,991 |



**Miistakis
Institute**



[Subscribe to our newsletter](#)



[Twitter](#)



[Facebook](#)



[YouTube](#)

www.rockies.ca

Innovative research. Engaged communities. Healthy landscapes.