

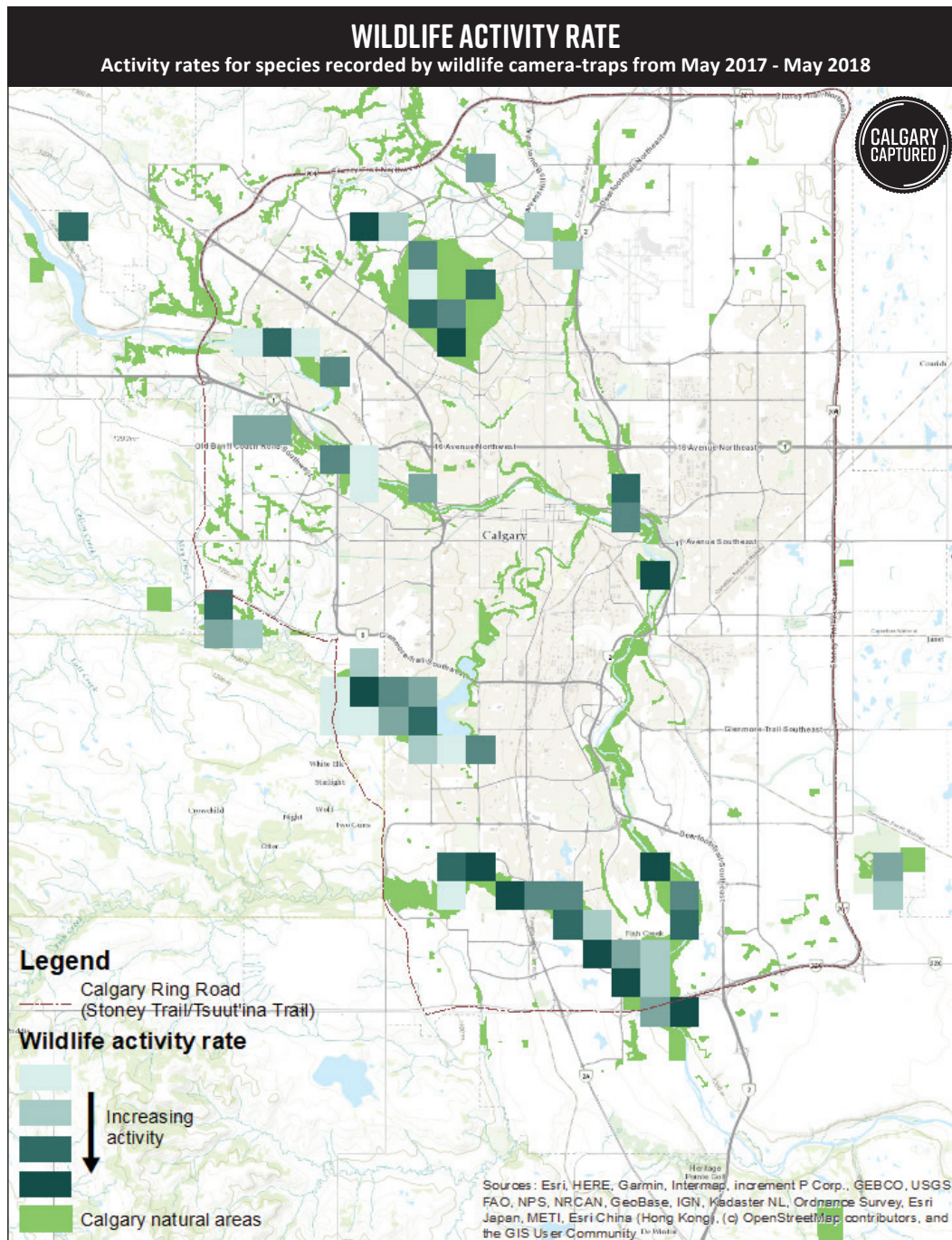
NEXT STEPS

As additional years are added to the dataset, we expect a more accurate representation of urban wildlife presence and trends in Calgary will emerge.

Additional cameras were placed in two ecological corridors in winter 2019/2020 to validate wildlife connectivity models, and inform our knowledge of how urban wildlife respond to the built environment.



This map shows the wildlife activity rate in four classes. The darkest color squares represents the highest wildlife activity detected on cameras (top 25%).



WANT TO HELP OUT WITH CALGARY CAPTURED?

Citizen science is an important part of our data-gathering, and can increase eco-literacy and social capital needed to support investment in mitigation to improve wildlife movement. Learn how to participate at: www.rockies.ca/imacalgarian/

CALGARY CAPTURED is a collaborative partnership with the Miistakis Institute, the City of Calgary, Alberta Environment and Parks, Friends of Fish Creek Provincial Park Society and Weaselhead/Glenmore Park Preservation Society. Thank you to our citizen scientists for their contributions.

THANK YOU TO

The Calgary Foundation, Alberta Ecotrust, and TD Friends of the Environment Foundation for their generous support of Calgary Captured



Citizens engaged in urban wildlife monitoring