

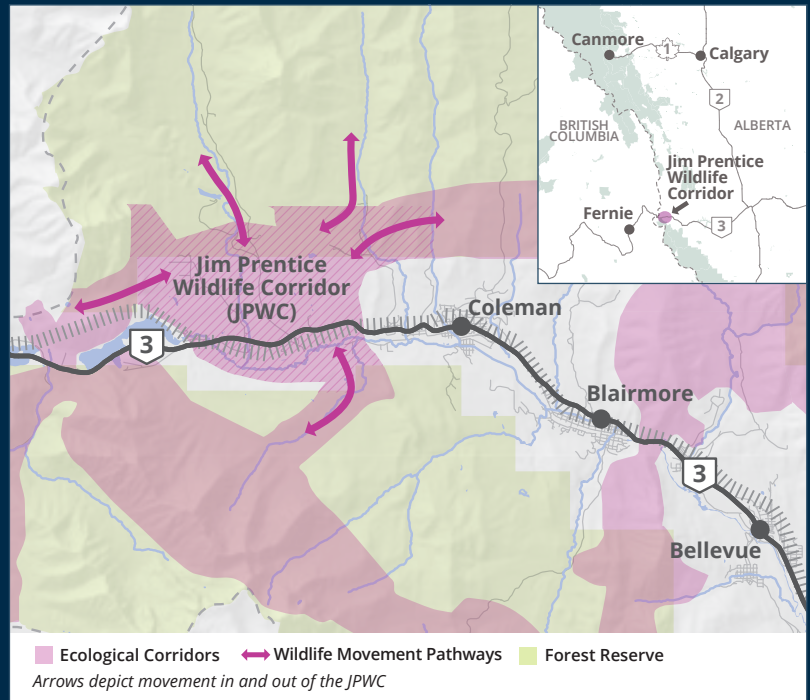
# Linking Landscapes

Helping wildlife move around the Crowsnest Pass



## We are monitoring wildlife along Highway 3

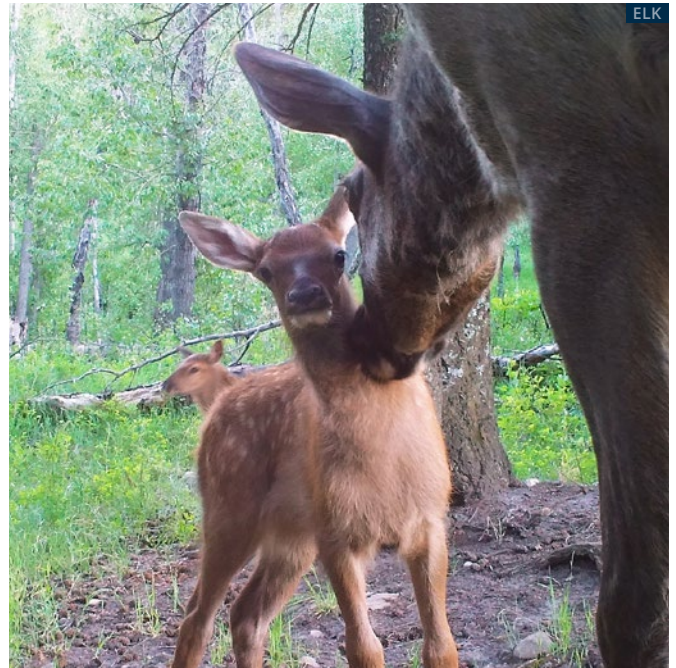
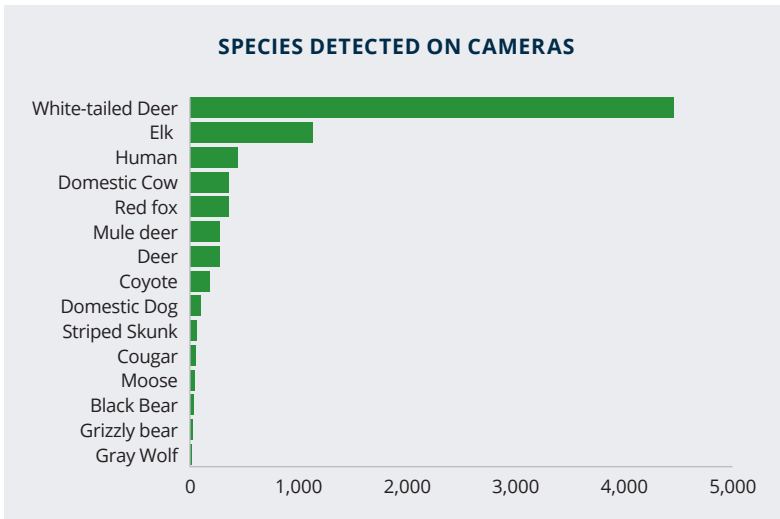
- The Crowsnest Pass contains the highest number of medium and large mammal species in North America.
- The Jim Prentice Wildlife Corridor is important to animal movement, but it is bisected by Highway 3 and a railway that animals need to cross to access food, water and mates.
- We installed 37 remote cameras to document wildlife activity along Highway 3 and to determine if wildlife are using existing infrastructure to cross the road.



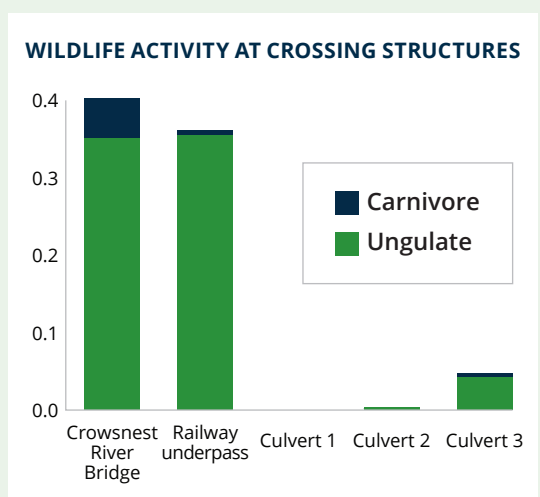
## Community volunteers are playing a big role

21 volunteers put in 333 volunteer hours to assist with the Linking Landscapes program by helping to manage cameras or classify images via the WildTrax platform.

**What did we observe on camera?** Our camera images show us which species are most commonly found in and around the Highway 3 area.



**Are wildlife using existing crossing structures?** Wildlife are active and crossing at the railway underpass and at the Crowsnest River bridge, indicating potential to modify these structures to improve safe wildlife movement. There was less wildlife activity at three smaller culverts along Highway 3 and no crossings of medium to large mammals detected.



**Whats next?** We plan to continue collecting camera images for a total of three years. We will compare wildlife activity with wildlife vehicle collision data and recommend road mitigation measures to help wildlife move safely across Highway 3.



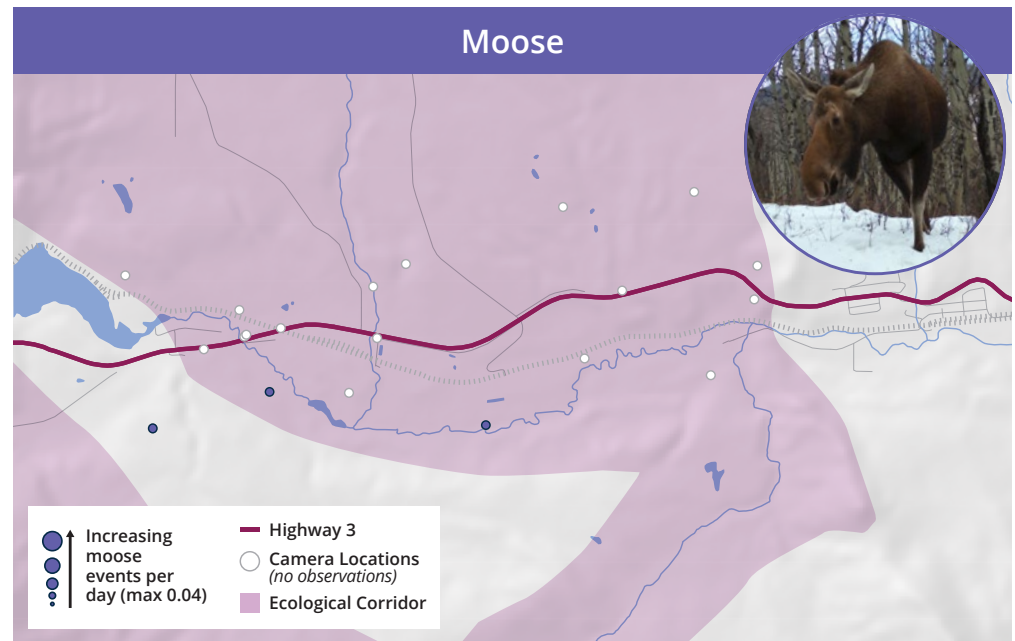
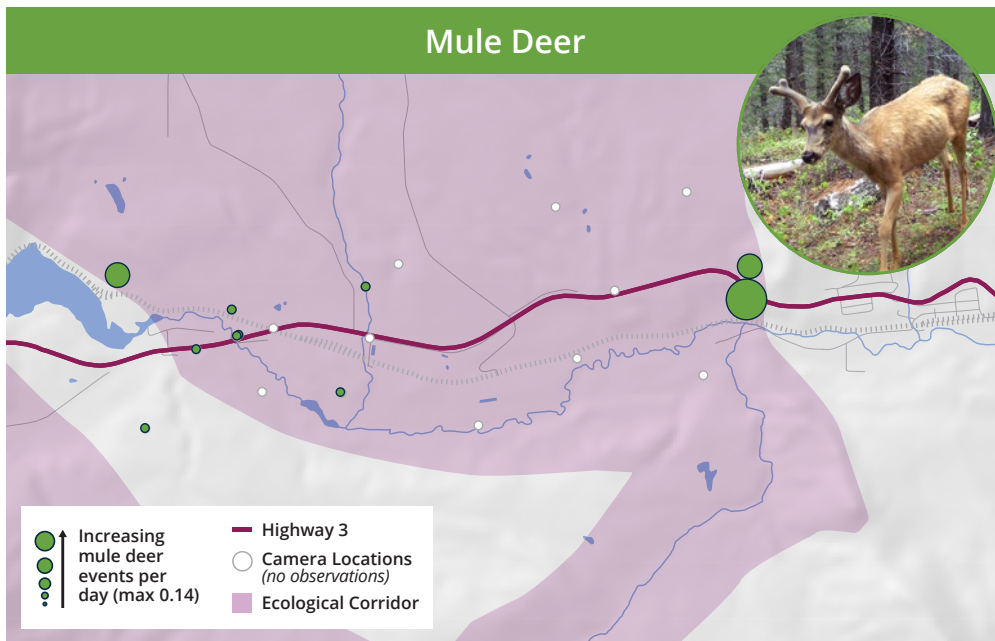
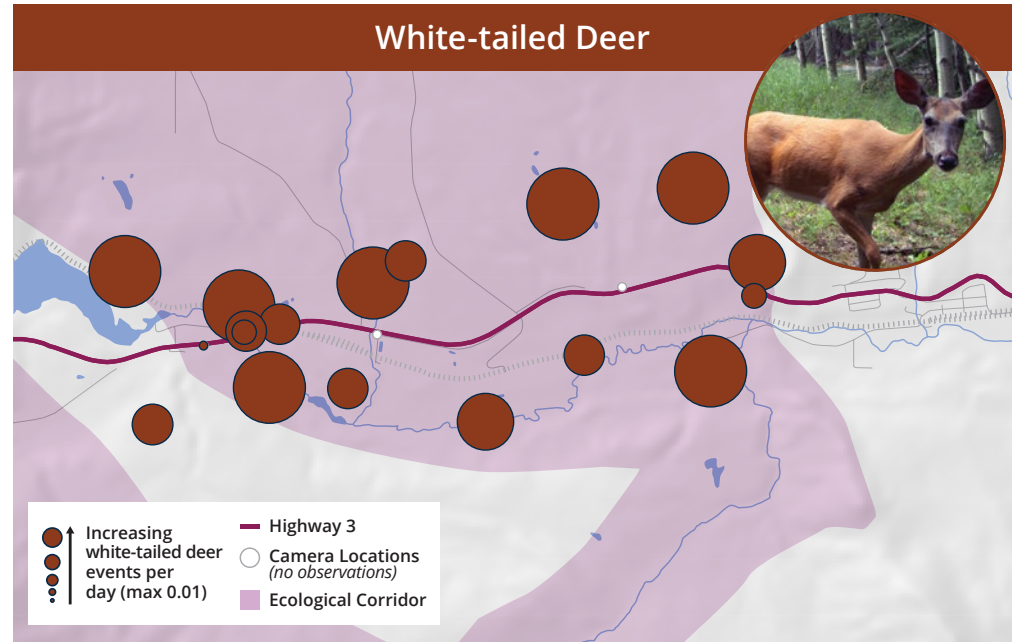
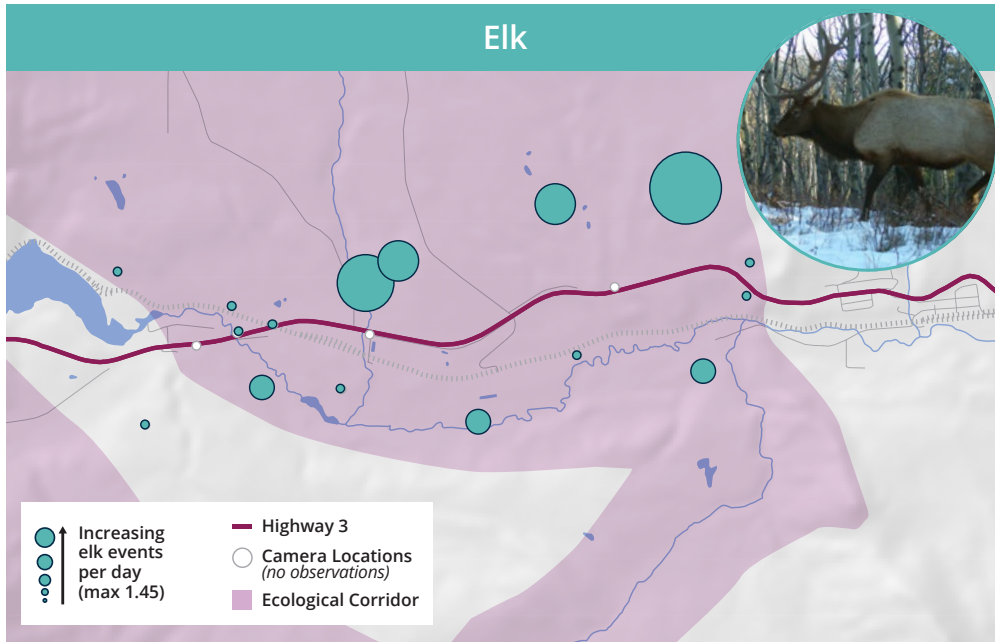
**FUNDERS**

Woodcock Foundation • Wilburforce Foundation • Canadian Pacific  
 TC Energy • Yellowstone to Yukon Conservation Initiative  
 Canadian Western Bank • TD Friends of the Environment  
 Alberta Biodiversity Monitoring Institute

POWERED BY COMMUNITY VOLUNTEERS

# Corridor Maps By Species: Ungulates

Here we display events per day by camera for different ungulate species, the bigger the circle the more times this species was detected at the camera location.



# Corridor Maps By Species: Carnivores

Here we display events per day by camera for different carnivore species, the bigger the circle the more times this species was detected at the camera location.

