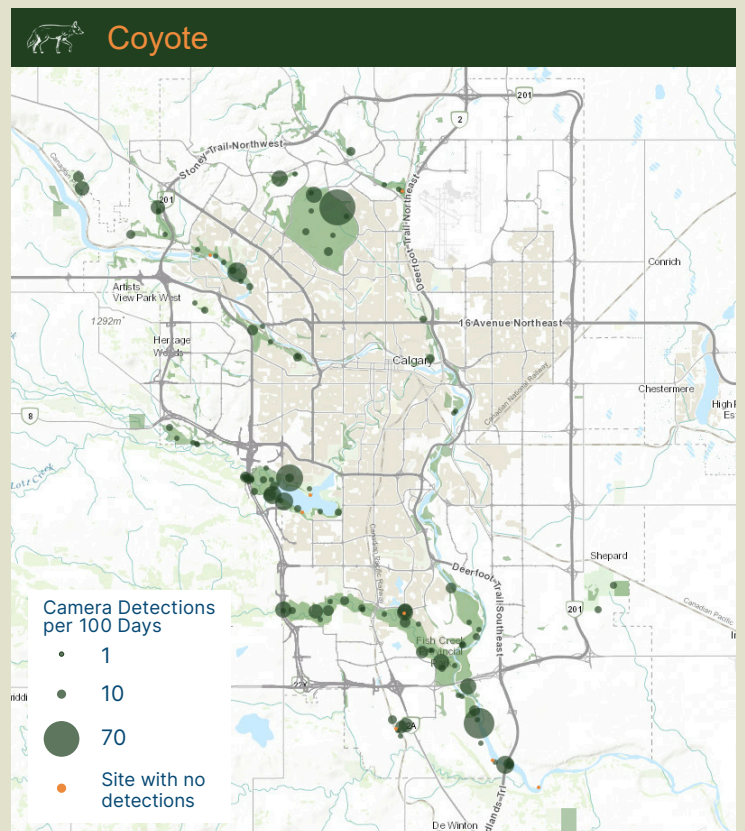
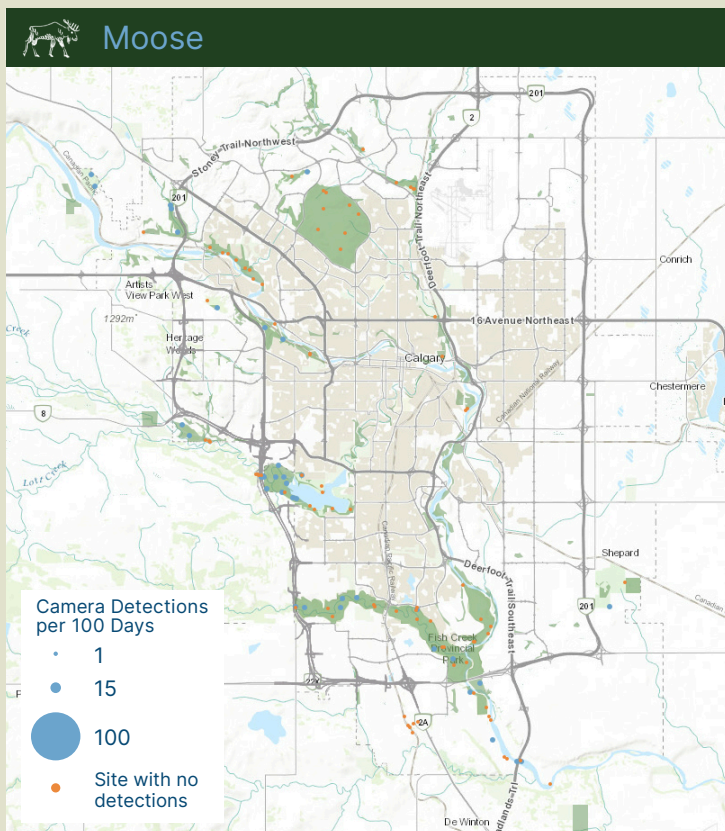
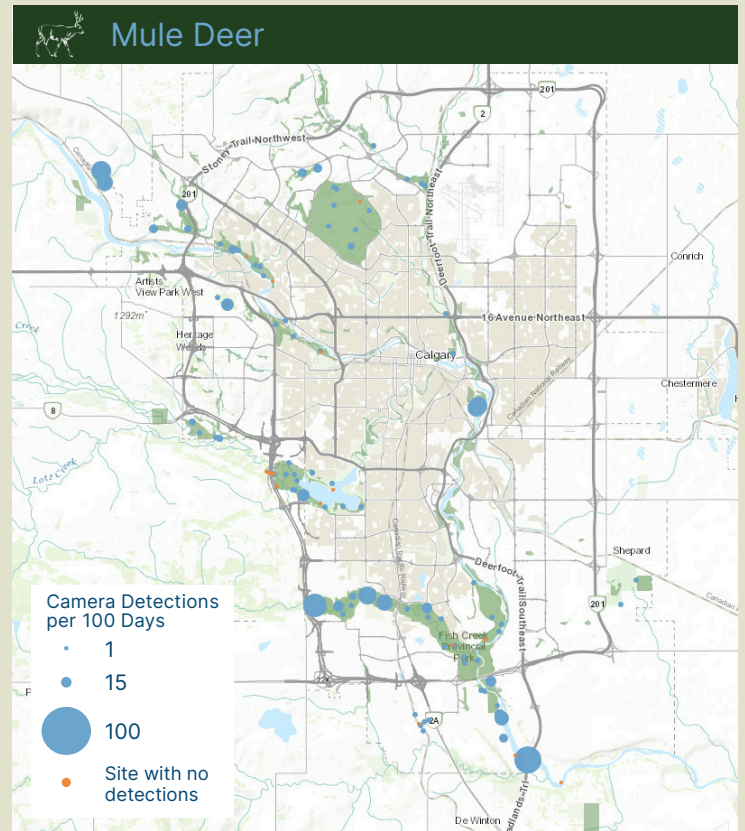
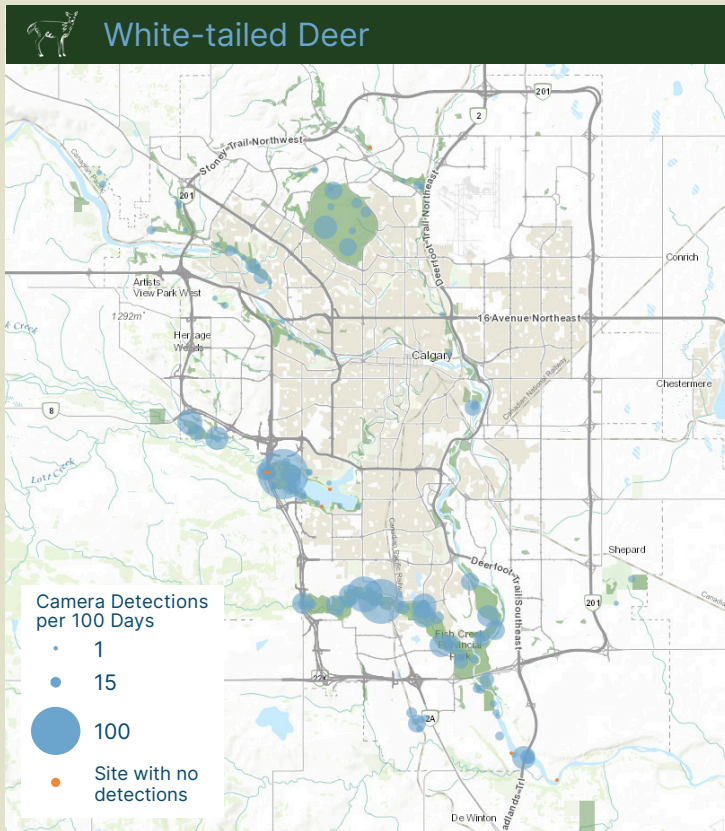


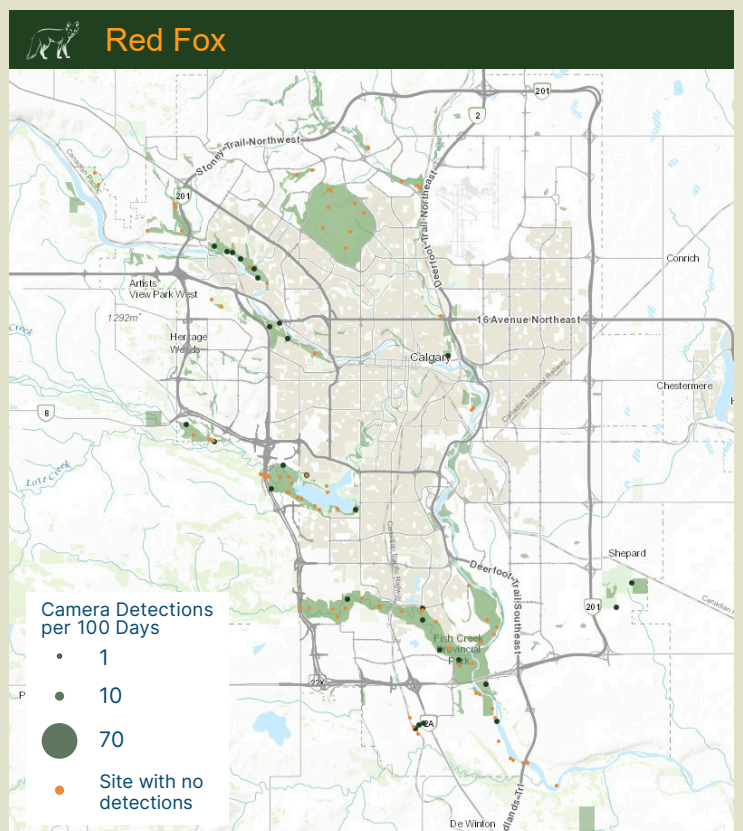
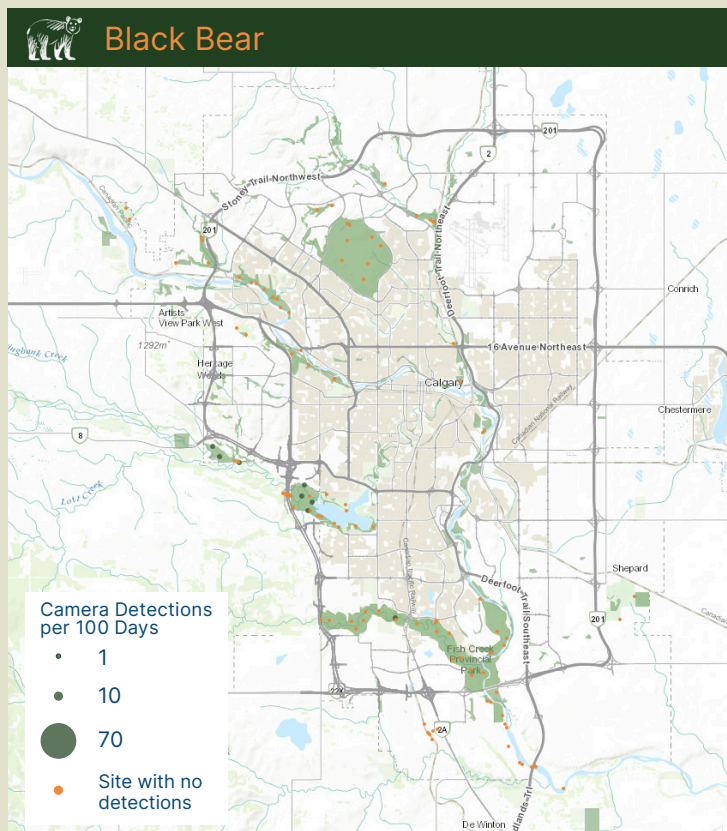
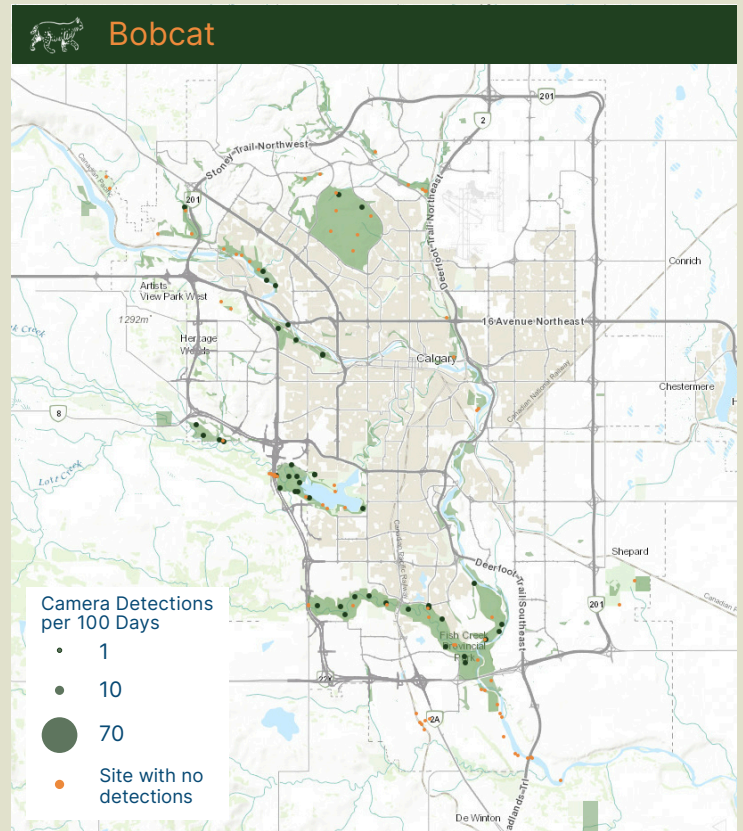
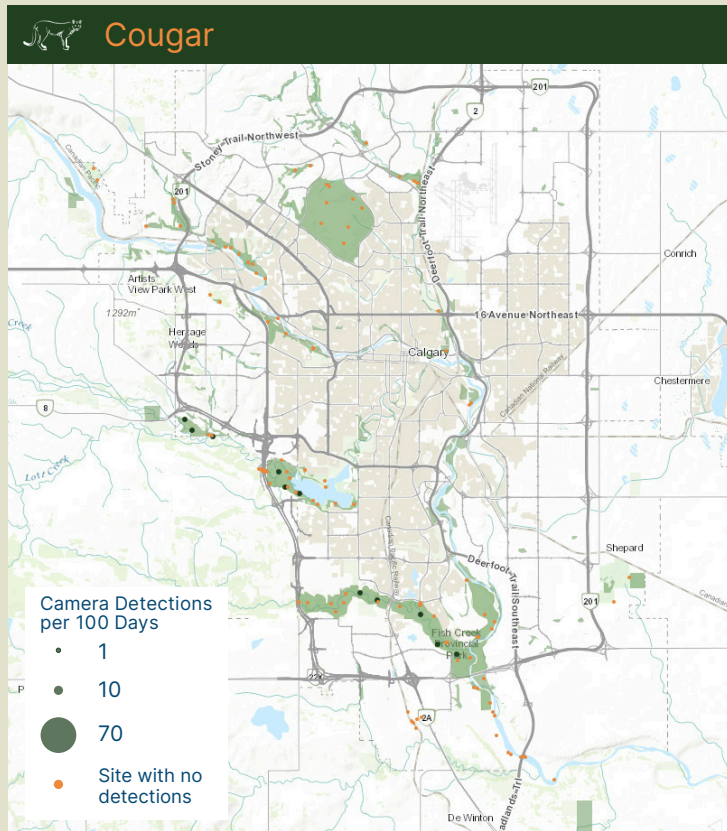
Species Activity Maps

Maps display the activity of **ungulates** (moose, white-tailed deer and mule deer), **carnivores**, and **domestic species** (dogs off leash and cats) captured on remote cameras. Ungulates and carnivores are shown using the same scale, domestic species are on a separate scale.



Species Activity Maps

Maps display the activity of **ungulates** (moose, white-tailed deer and mule deer), **carnivores**, and **domestic species** (dogs off leash and cats) captured on remote cameras. Ungulates and carnivores are shown using the same scale, domestic species are on a separate scale.



Species Activity Maps

Maps display the activity of **ungulates** (moose, white-tailed deer and mule deer), **carnivores**, and **domestic species** (dogs off leash and cats) captured on remote cameras. Ungulates and carnivores are shown using the same scale, domestic species are on a separate scale.

